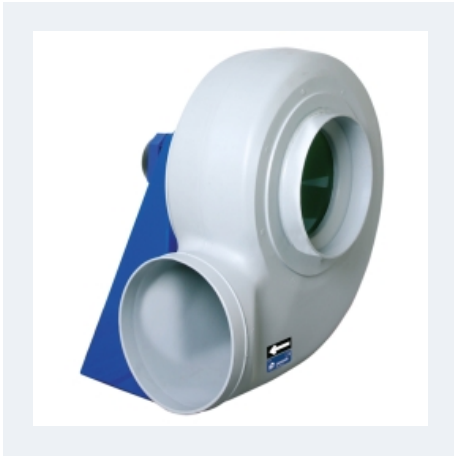


**MBP**



**MEDIUM PRESSURE WITH BACKWARD IMPELLER AND PLASTIC CONSTRUCTION**

MANUFACTURING FEATURES:

- PE plastic housing.
- Backward impeller with self-cleaning system in PP plastic.
- Motor support made of rolled steel sheet with polyester powder finishing coat.
- Stainless steel nuts and bolts.
- Standard asynchronous squirrel-cage motor, IP-55, class F insulation. Standard voltages 230/400V 50Hz

- Available positions (to be indicated in case of order): LG270, LG0, LG45, LG90, LG135, LG180, LG225, LG315, RD0, RD45, RD90, RD135, RD180, RD225, RD270, RD315.
- The indicated codes correspond to the model in position LG270

APPLICATIONS:

Designed for inline installation, they are suitable for:

- Corrosive air transport.
- Chemical and petrochemical industry.
- Laboratories and gas cabinets.

- Maximum temperature of transported air: If it is clean air 70°C, other depends on the gas (see table in documentation)

UNDER REQUEST:

- Single phase motors (up to 1,1Kw).
- 60Hz fans and special voltages fans.
- 2 speed motors.
- Stainless steel motor support.
- Casing made of PP.

**Accessories**



## Technical data

### Three-phase motor / 2 poles

Code	Model	R.P.M.	Rated I. A		Rated power kW	Max. Airflow m <sup>3</sup> /h	Sound db (A)**	Weight kg	Connect. diagram
			230V	400V					
502202013	MBP 20 T2 0,18kW	2710	1,00	0,55	0,18	1.110	64	9	1
502202214	MBP 22 T2 0,25kW	2710	1,2	0,71	0,25	1.520	68	10	1
502202515	MBP 25 T2 0,37kW	2730	1,7	0,97	0,37	2.110	71	13	1
502202817	MBP 28 T2 0,75kW	2840	3,00	1,75	0,75	3.140	76	19	1
502203119	MBP 31 T2 1,5kW	2850	5,5	3,2	1,50	4.360	76	26	1
502203527	MBP 35 T2 2,2kW	2860	7,9	4,54	2,20	6.630	80	32	1
502204534	MBP 45 T2 5,5kW	2900	-	11,00	5,50	11.770	76	57	1

### Three-phase motor / 4 poles

Code	Model	R.P.M.	Rated I. A		Rated power kW	Max. Airflow m <sup>3</sup> /h	Sound db (A)**	Weight kg	Connect. diagram
			230V	400V					
502202039	MBP 20 T4 0,12kW	1360	1,00	0,55	0,12	580	50	9	1
502202239	MBP 22 T4 0,12kW	1400	1,38	0,79	0,25	770	53	13	1
502202539	MBP 25 T4 0,12kW	1360	1,00	0,55	0,12	1.100	57	10	1
502202840	MBP 28 T4 0,18kW	1310	1,2	0,7	0,18	1.570	59	14	1
502203141	MBP 31 T4 0,25kW	1350	1,4	0,8	0,25	2.170	59	19	1
502203542	MBP 35 T4 0,37kW	1370	1,9	1,1	0,37	3.310	64	23	1
502204043	MBP 40 T4 0,55kW	1370	2,7	1,58	0,55	4.510	68	33	1
502204545	MBP 45 T4 1,1kW	1420	4,3	2,5	1,10	6.060	68	40	1

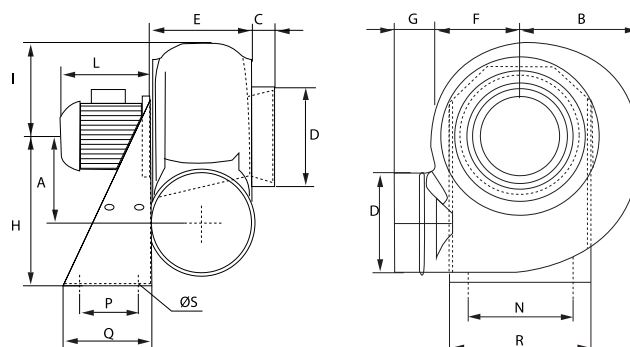
### Three-phase motor / 6 poles

Code	Model	R.P.M.	Rated I. A		Rated power kW	Max. Airflow m <sup>3</sup> /h	Sound db (A)**	Weight kg	Connect. diagram
			230V	400V					
502203168	MBP 31 T6 0,18kW	880	1,2	0,7	0,18	1.410	50	19	1
502203568	MBP 35 T6 0,18kW	880	1,2	0,7	0,18	2.140	54	23	1
502204069	MBP 40 T6 0,25kW	900	1,5	0,87	0,25	2.920	58	30	1
502204570	MBP 45 T6 0,37kW	900	2,1	1,23	0,37	3.930	54	37	1

#### Notes:

\*\* Total sound pressure level at the point of maximum flow measured in dB(A) in the suction measured in free field at a distance of 6m from the source

## Dimensions



Model	A	B	C	D	DØ	E	F	G	H
MBP 20 T2 0,18kW	140	180	35	-	160	160	138	55	250
MBP 20 T4 0,12kW	140	180	35	-	160	160	138	55	250
MBP 22 T2 0,25kW	173	228	35	-	200	185	170	55	310
MBP 22 T4 0,12kW	173	228	35	-	200	185	170	55	310
MBP 25 T2 0,37kW	173	228	35	-	200	185	170	55	310
MBP 25 T4 0,12kW	173	228	35	-	200	185	170	55	310
MBP 28 T2 0,75kW	208	255	40	-	225	195	190	70	350
MBP 28 T4 0,18kW	208	255	40	-	225	195	190	70	350
MBP 31 T2 1,5kW	240	280	40	-	250	200	210	70	410
MBP 31 T4 0,25kW	240	280	40	-	250	200	210	70	410
MBP 31 T6 0,18kW	240	280	40	-	250	200	210	70	410
MBP 35 T2 2,2kW	260	312	40	-	280	237	230	50	445
MBP 35 T4 0,37kW	260	312	40	-	280	237	230	50	445
MBP 35 T6 0,18kW	260	312	40	-	280	237	230	50	445
MBP 40 T4 0,55kW	290	356	40	-	315	252	264	55	495
MBP 40 T6 0,25kW	290	356	40	-	315	252	264	55	495
MBP 45 T2 5,5kW	324	400	40	355	-	287	295	55	550
MBP 45 T4 1,1kW	324	400	40	-	355	287	395	55	550
MBP 45 T6 0,37kW	324	400	40	-	355	287	295	55	550

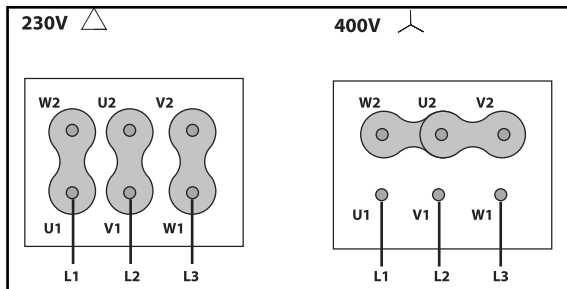
Model	I	L	N	P	Q	R	S	ØS
MBP 20 T2 0,18kW	150	195	200	100	140	235	11	-
MBP 20 T4 0,12kW	150	190	200	100	140	235	11	-
MBP 22 T2 0,25kW	190	210	255	100	140	290	11	-
MBP 22 T4 0,12kW	190	190	225	100	140	290	11	-

Model	I	L	N	P	Q	R	S	ØS
MBP 25 T2 0,37kW	190	220	255	100	140	290	11	-
MBP 25 T4 0,12kW	190	190	255	100	140	290	11	-
MBP 28 T2 0,75kW	210	240	280	120	190	316	11	-
MBP 28 T4 0,18kW	210	190	280	120	190	316	11	-
MBP 31 T2 1,5kW	230	290	320	150	230	355	11	-
MBP 31 T4 0,25kW	230	220	320	150	230	355	11	-
MBP 31 T6 0,18kW	230	210	320	150	230	355	11	-
MBP 35 T2 2,2kW	270	290	355	150	230	390	11	-
MBP 35 T4 0,37kW	270	220	355	150	230	390	11	-
MBP 35 T6 0,18kW	270	210	355	150	230	390	11	-
MBP 40 T4 0,55kW	295	240	325	170	250	365	11	-
MBP 40 T6 0,25kW	295	220	325	170	250	365	11	-
MBP 45 T2 5,5kW	330	415	370	270	340	410	-	11
MBP 45 T4 1,1kW	330	290	370	170	250	410	11	-
MBP 45 T6 0,37kW	330	240	370	170	250	410	11	-

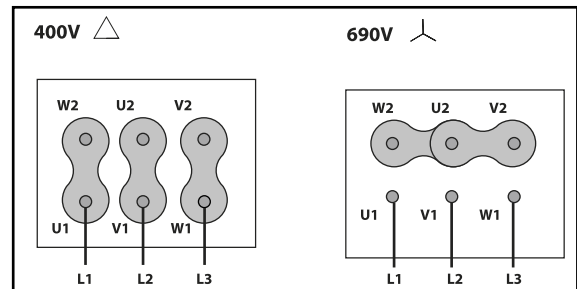
## Wiring diagram

### Wiring diagram N° 1

230/400V



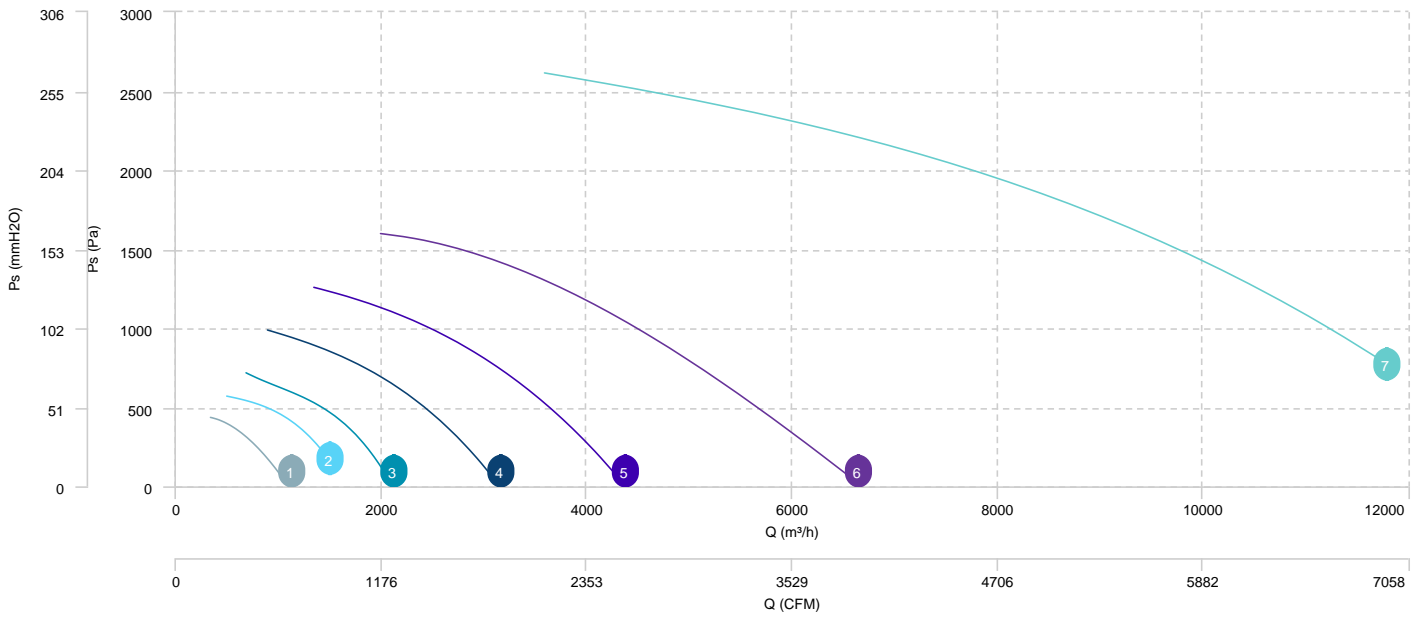
400/690V



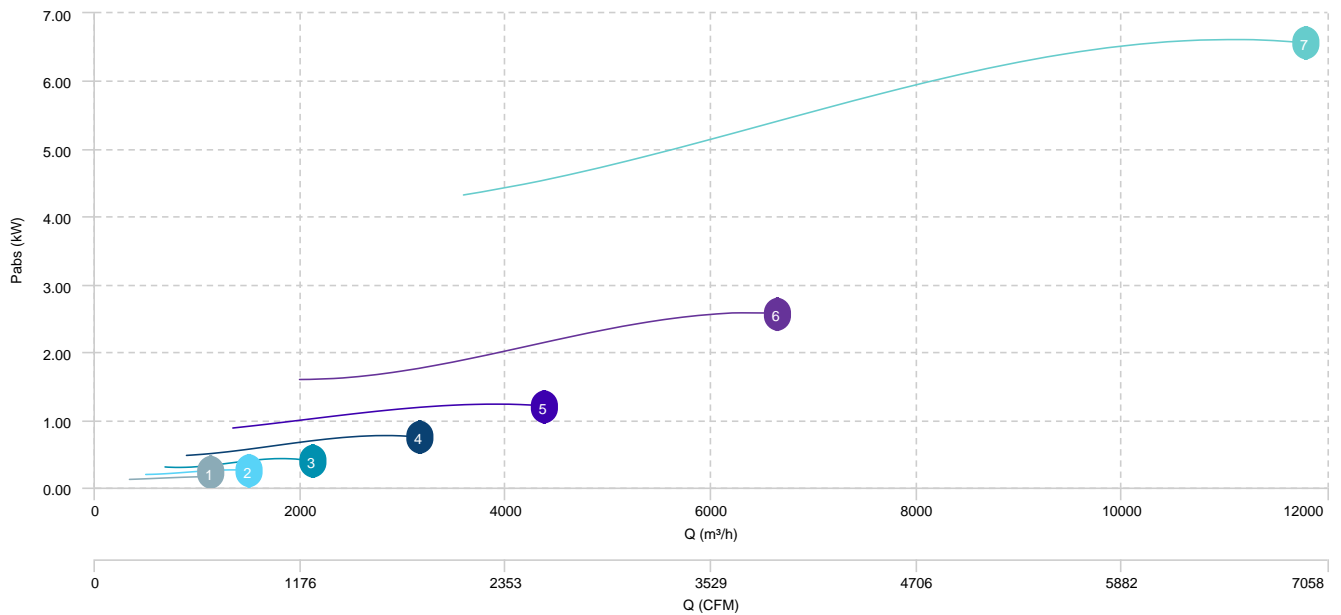
# CHARACTERISTIC CURVE

1	MBP 20 T2 0,18kW	2	MBP 22 T2 0,25kW	3	MBP 25 T2 0,37kW	4	MBP 28 T2 0,75kW
5	MBP 31 T2 1,5kW	6	MBP 35 T2 2,2kW	7	MBP 45 T2 5,5kW		

## AIR FLOW - PRESSURE

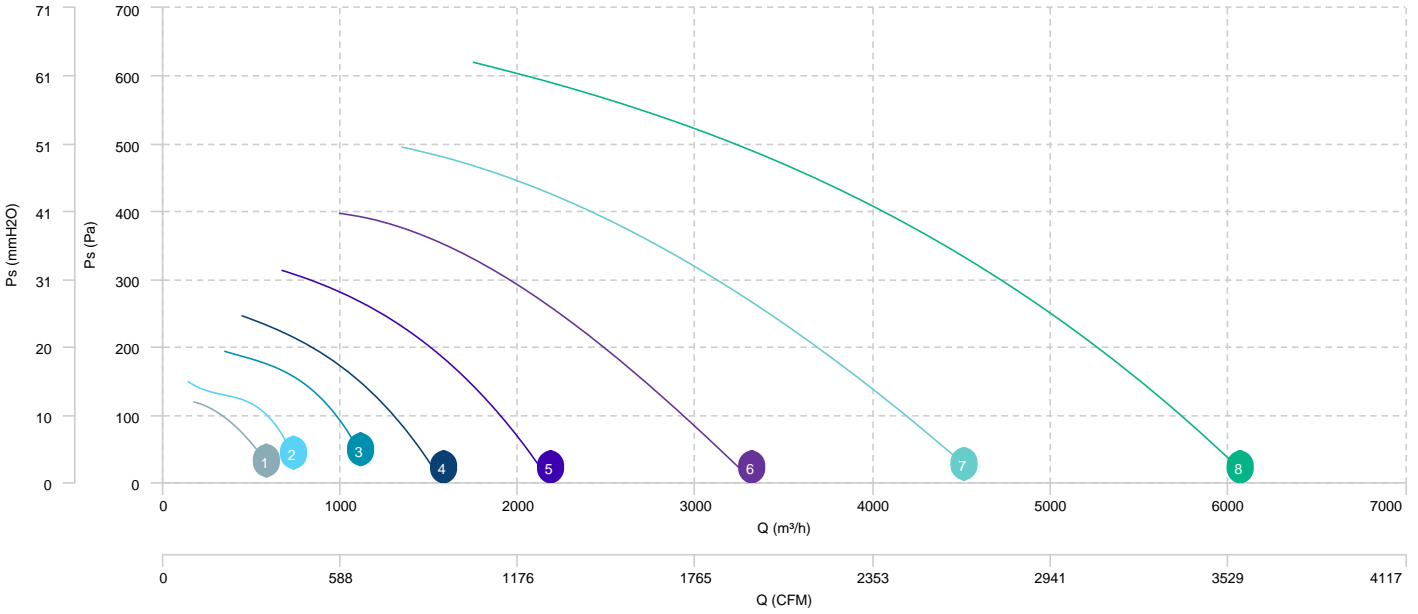


## AIR FLOW - ABSORBED POWER

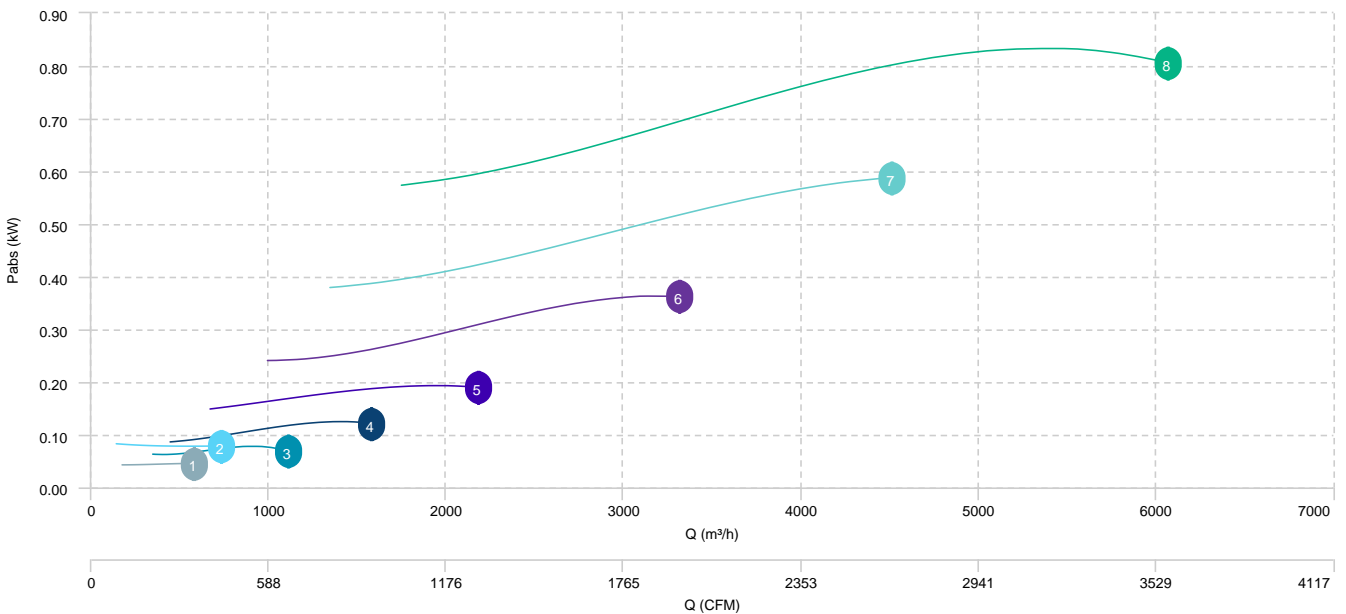


1	MBP 20 T4 0,12kW	2	MBP 22 T4 0,12kW	3	MBP 25 T4 0,12kW	4	MBP 28 T4 0,18kW
5	MBP 31 T4 0,25kW	6	MBP 35 T4 0,37kW	7	MBP 40 T4 0,55kW	8	MBP 45 T4 1,1kW

**AIR FLOW - PRESSURE**



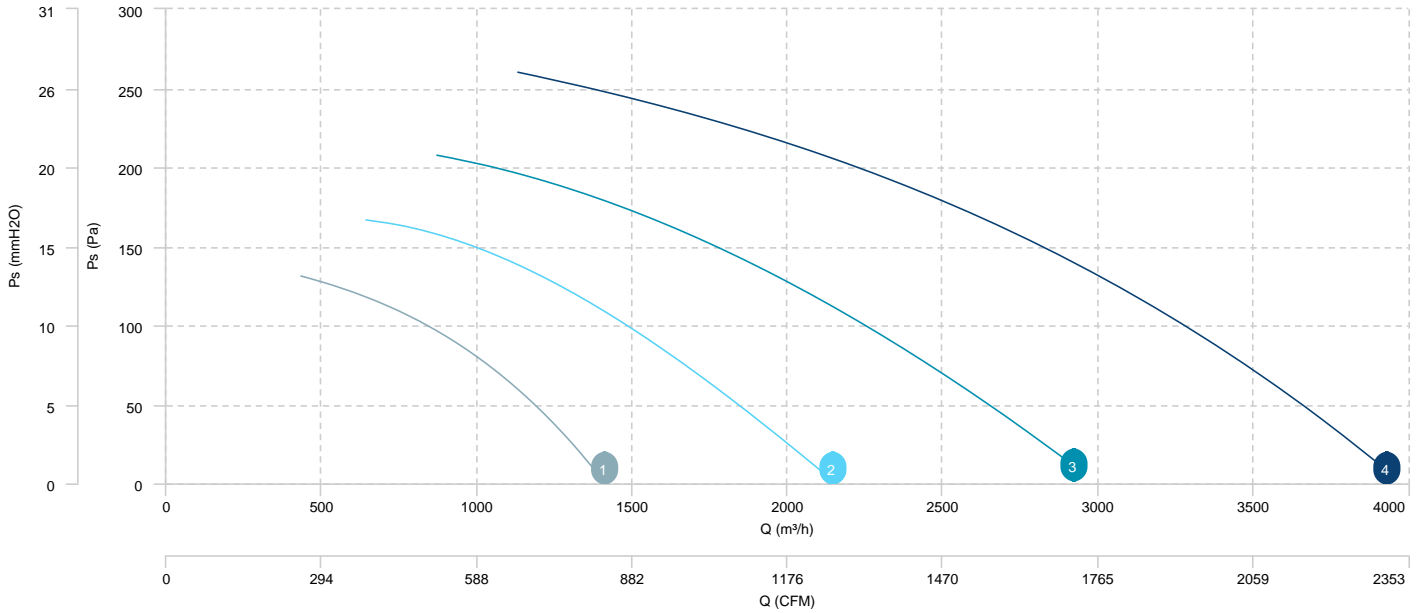
**AIR FLOW - ABSORBED POWER**



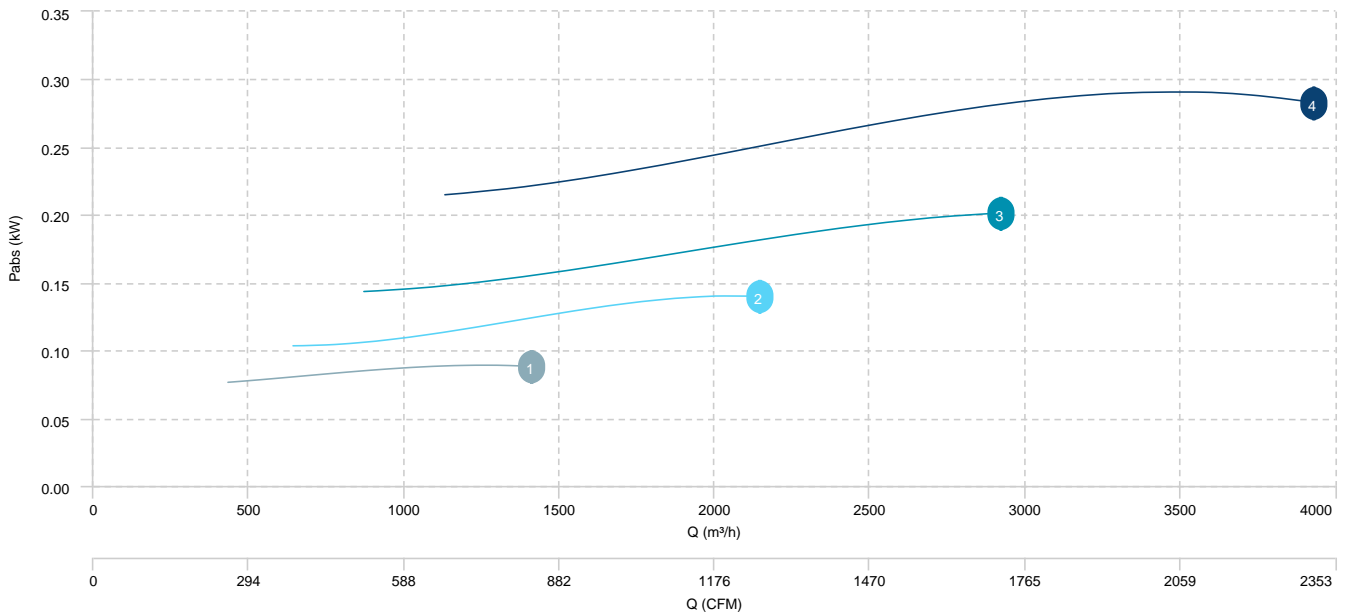
**CENTRIFUGAL FANS: MEDIUM PRESSURE**

- 1 MBP 31 T6 0,18kW
- 2 MBP 35 T6 0,18kW
- 3 MBP 40 T6 0,25kW
- 4 MBP 45 T6 0,37kW

**AIR FLOW - PRESSURE**



**AIR FLOW - ABSORBED POWER**





## Sound data

### Sound / 2 poles

Sound power Lw dB (A)										
Model		63 Hz	125 Hz	250 Hz	500 Hz	1000 Hz	2000 Hz	4000 Hz	8000 Hz	Total
MBP 20 T2 0,18kW	Inlet	62	74	80	85	85	81	73	63	90
MBP 22 T2 0,25kW	Inlet	66	78	84	90	89	85	77	67	94
MBP 25 T2 0,37kW	Inlet	69	81	87	93	92	88	80	70	97
MBP 28 T2 0,75kW	Inlet	73	85	91	97	96	93	84	74	102
MBP 31 T2 1,5kW	Inlet	73	85	91	97	96	93	84	74	102
MBP 35 T2 2,2kW	Inlet	78	90	95	102	101	97	89	79	106
MBP 45 T2 5,5kW	Inlet	74	86	95	95	97	94	85	75	102

### Sound / 4 poles

Sound power Lw dB (A)										
Model		63 Hz	125 Hz	250 Hz	500 Hz	1000 Hz	2000 Hz	4000 Hz	8000 Hz	Total
MBP 20 T4 0,12kW	Inlet	48	60	68	69	71	67	59	49	76
MBP 22 T4 0,12kW	Inlet	51	63	72	72	74	71	62	52	79
MBP 25 T4 0,12kW	Inlet	55	67	75	76	78	74	66	56	83
MBP 28 T4 0,18kW	Inlet	57	70	77	78	80	76	68	58	85
MBP 31 T4 0,25kW	Inlet	57	70	77	78	81	77	69	58	85
MBP 35 T4 0,37kW	Inlet	62	74	82	83	85	81	73	63	90
MBP 40 T4 0,55kW	Inlet	66	78	86	87	89	86	77	67	94
MBP 45 T4 1,1kW	Inlet	66	78	86	87	89	85	77	67	94

### Sound / 6 poles

Sound power Lw dB (A)										
Model		63 Hz	125 Hz	250 Hz	500 Hz	1000 Hz	2000 Hz	4000 Hz	8000 Hz	Total
MBP 31 T6 0,18kW	Inlet	48	37	66	69	72	68	60	50	76
MBP 35 T6 0,18kW	Inlet	53	68	70	74	76	72	64	54	80
MBP 40 T6 0,25kW	Inlet	57	72	74	78	80	76	68	58	84
MBP 45 T6 0,37kW	Inlet	53	68	70	74	76	72	64	54	80