

## ENKELBOX EEC



## High efficiency boxes

High efficiency centrifugal fan boxes with external rotor EC motor

### | MANUFACTURING FEATURES

- Inline ventilation box made of galvanized steel for duct connection.
- Plug-type fan with self-cleaning impeller with back curved blades (backward), high performance and single inlet, direct driven. Dynamically balanced to minimize noise and vibration. Polyamide reinforced impeller for models 155 and 190 and aluminum impellers for the rest.
- High efficiency, low noise external rotor EC motor. Speed control through a 0-10V or PWM signal. Single-phase 230V 50/60Hz power supply for models 155 to 310 and three-phase 400V 50/60Hz for sizes 355 and 450. IP44 motor and class B insulation.
- The box is supplied with a safety switch with potentiometer for a total regulation (PMR).

### | APPLICATIONS

- Designed for duct installation, they are indicated for:
- Air renewal in all types of buildings and industries.
  - Air renewal in office buildings, shopping centers, warehouses, etc.
  - Kitchen hoods.
- Working temperature range from -20°C to 60°C.

### | UNDER REQUEST

- Fan (size between 250 and 450) with k-factor reading.

### SINGLE PHASE RANGE

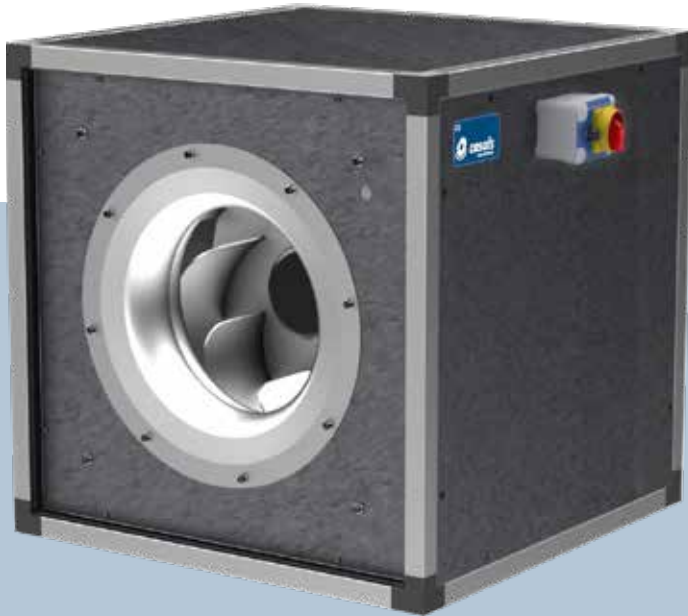
Code	Model	R.P.M.	Rated I (A) 230V	Power kW	Air flow m <sup>3</sup> /h	Sound dB (A)	Weight Kg
ENKBEC155	ENKELBOX 155 EEC	3950	0,25	0,06	450	44	10
ENKBEC190	ENKELBOX 190 EEC	3570	0,73	0,10	740	47	13
ENKBEC250	ENKELBOX 250 EEC	2500	1,00	0,15	1.590	49	23
ENKBEC310	ENKELBOX 310 EEC	2350	1,7	0,36	3.070	53	32

### THREE PHASE RANGE

Code	Model	R.P.M.	Rated I (A) 400V	Power kW	Air flow m <sup>3</sup> /h	Sound dB (A)	Weight Kg
ENKBEC355	ENKELBOX 355 EEC	2100	1,63	0,99	4.740	53	47
ENKBEC450	ENKELBOX 450 EEC	1450	1,67	1,01	6.750	46	70



**ENKELBOX PLUS EEC**



# Insulated high efficiency boxes

High-efficiency centrifugal fan boxes with sandwich panel and external rotor EC motor

**| MANUFACTURING FEATURES**

- Ventilation box with 30 mm aluminum profile structure, nylon corners, galvanized sandwich panels with internal insulation rockwool (25mm thickness) class A1 (non-combustible) of 90kg/m<sup>3</sup> density. All panels are equipped with "fastening system" for the quick assembly and disassembly whenever required, either for cleaning, maintenance.
- Plug-type fan with self-cleaning impeller with back curved blades (backward), high performance and single inlet, direct driven. Dynamically balanced to minimize noise and vibration. Polyamide reinforced impeller for models 155 and 190 and aluminum impellers for the rest.
- High efficiency, low noise external rotor EC motor. Speed control through a 0-10V or PWM signal. Single-phase 230V 50/60Hz power supply for models 155 to 310 and three-phase 400V 50/60Hz for sizes 355 and 450. IP44 motor and class B insulation.
- The box is supplied with a safety switch with potentiometer for a total regulation (PMR).

**| APPLICATIONS**

- Designed for duct installation, they are indicated for:
- Air renewal in all types of buildings and industries.
  - Air renewal in office buildings, shopping centers, warehouses, etc.
  - Kitchen hoods.
- Working temperature range from -20°C to 60°C.

**| UNDER REQUEST**

- Fan (size between 250 and 450) with k-factor reading.

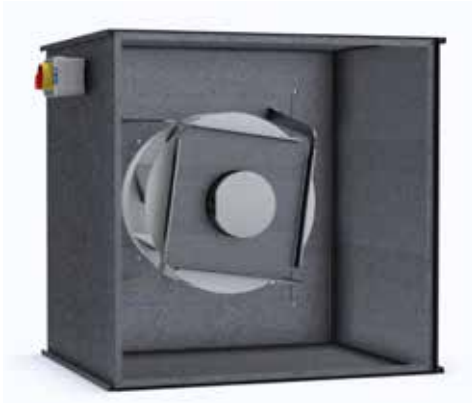
**SINGLE PHASE RANGE**

Code	Model	R.P.M.	Rated I (A) 230V	Power kW	Air flow m <sup>3</sup> /h	Sound dB (A)	Weight Kg
ENKBPEC155	ENKELBOX PLUS 155 EEC	3950	0,25	0,06	450	40	10
ENKBPEC190	ENKELBOX PLUS 190 EEC	3570	0,73	0,10	740	43	11
ENKBPEC250	ENKELBOX PLUS 250 EEC	2500	1,00	0,15	1.590	45	15
ENKBPEC310	ENKELBOX PLUS 310 EEC	2350	1,7	0,36	3.070	49	24

**THREE PHASE RANGE**

Code	Model	R.P.M.	Rated I (A) 400V	Power kW	Air flow m <sup>3</sup> /h	Sound dB (A)	Weight Kg
ENKBPEC355	ENKELBOX PLUS 355 EEC	2100	1,63	0,99	4.740	49	30
ENKBPEC450	ENKELBOX PLUS 450 EEC	1450	1,67	1,01	6.750	42	46

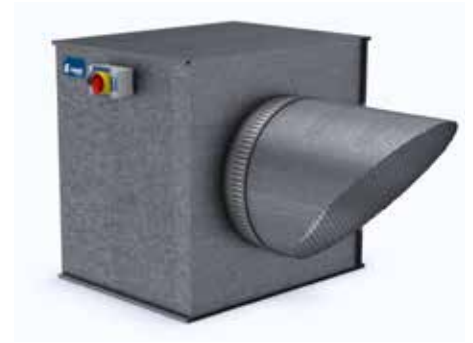
**DETAILS**  
**ENKELBOX EEC & ENKELBOX PLUS EEC**



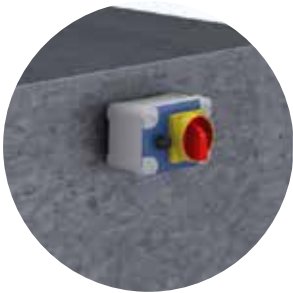
**BACK SIDE OF  
ENKELBOX EEC**



**BACK SIDE OF  
ENKELBOX PLUS EEC**



**ACCESSORIES. COVER WITH CIRCULAR  
OUTDOOR FLANGE AND GRID**



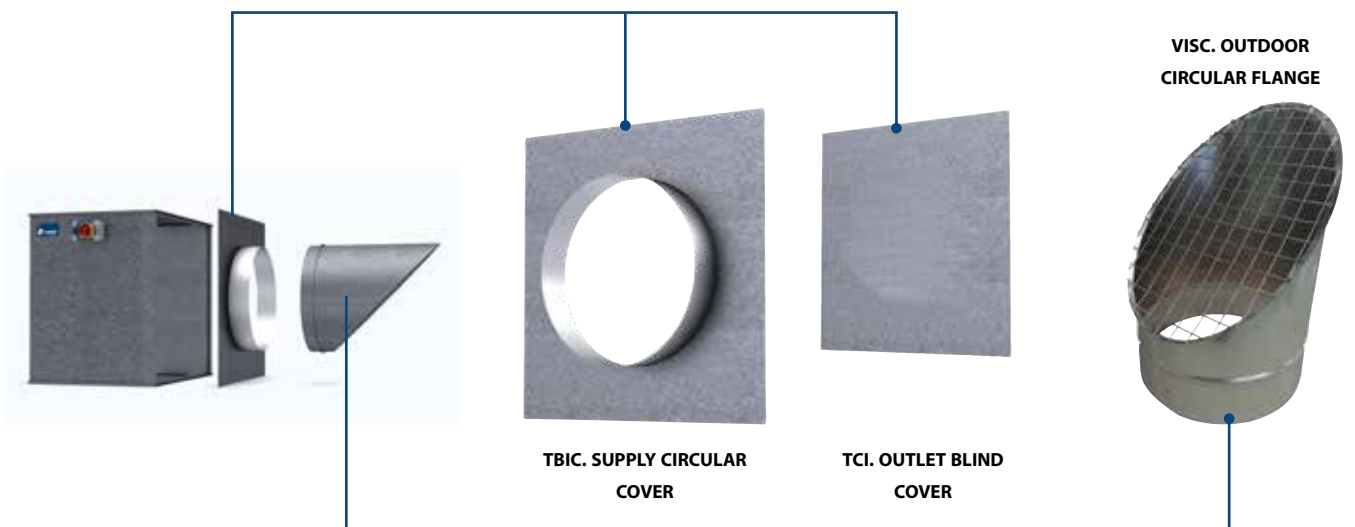
**INTEGRATED SWITCH  
PMR**



**PROFILE AND NYLON CORNERS OF  
ENKELBOX PLUS EEC**



**CENTRIFUGAL IMPELLER  
AND EEC MOTOR**



**TBIC. SUPPLY CIRCULAR  
COVER**

**TCI. OUTLET BLIND  
COVER**

**VISC. OUTDOOR  
CIRCULAR FLANGE**