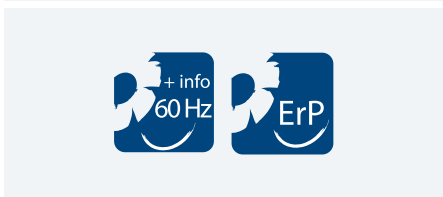




AAVA

High pressure fan for clean air with backward blades

Ventilador de alta presión para aire limpio con palas hacia atrás



MANUFACTURING FEATURES

- Fan made of Fe360 sheet. The fan paint finish is based on a Qualicoat polyester powder coating stoved at 200°C, with an average film thickness of 70 microns. Average heat resistance of coating is 180°C with peaks of 200°C.
- Fully welded housing.
- High efficiency single inlet backward curved impeller made of Fe360 sheet statically and dynamically balanced. Impellers are painted with polyester primer that resists temperatures up to 300°C.
- Standard asynchronous squirrel-cage motor with IP-55 protection and class F insulation. Manufactured with standard voltages: 230/400V 50Hz in three phase motors up to 4kW and 400/690V 50Hz for higher powers.
- Standard orientation LG270.
- It allows adjusting the orientation locally from models 220 to 630. Models sizes from 710 to 1000 size the orientation is fixed.
- Optional front support.

APPLICATIONS

- Designed for inline installation, they are suitable for:
- Industrial applications, air extraction or injection.
 - Cooling of machines and parts.
 - Clean air transport.
 - Exhaust after filters, separators and cyclones.
 - Pneumatic transport.
 - Maximum working temperature: carried air 130°C; environment 60°C.

UNDER REQUEST

- Fans for special voltages.
- 2 speed motor.
- C4 or C5 coating painting.
- Hot dip galvanized.
- Special steel (Cor-Ten A, Hardox...).
- Inox 304 (normal or electropolished finish).
- Inox 316 (normal or electropolished finish).
- Cooling wheel.
- Anticaloric paint.
- Reinforced housing.
- Fully welded housing (waterproof).
- Welded impeller.
- Insulated housing.
- Split casing (for big sizes).
- Inspection door to facilitate maintenance and cleaning.
- Drain plug.
- Airtight shaft.
- Frontal foot.
- Double suction flange.
- Available in non-sparking air passage and standard motor.
- Other brands of motors.
- Orientation: RD0, RD45, RD90, RD135, RD180, RD225, RD270, RD315, LG0, LG45, LG90, LG135, LG180. LG225, LG315

CARACTERÍSTICAS CONSTRUCTIVAS

- Ventilador fabricado en chapa Fe360. La pintura de los ventiladores está formulada a base de poliéster en polvo Qualicoat polimerizada a 200°C con un grosor medio de 70 micras. La resistencia térmica media de la pintura es de 180°C con picos de 200°C.
- Turbina reacción y simple aspiración, fabricada en Fe360 equilibrada estática y dinámicamente. Las turbinas se pintan con imprimación de poliéster con una resistencia térmica de 300°C.
- Motor asíncrono normalizado de jaula de ardilla con protección IP-55 y aislamiento clase F. Voltajes estándar 230/400V 50Hz para motores trifásicos hasta 4kW y 400/690V 50Hz para potencias superiores.
- Orientación estándar LG270.
- Permite variar la orientación en destino, en los modelos del 220 al 630. En los tamaños que van del 710 al 1000, la orientación es fija.
- Pie delantero opcional.

APLICACIONES

- Diseñados para instalación en conducto, son indicados para:
- Procesos industriales, extracción o inyección localizada.
 - Refrigeración de máquinas, enfriamiento de piezas.
 - Transporte de aire limpio.
 - Aspiración después de filtros, separadores y ciclones.
 - Transporte neumático.
 - Temperatura máxima de trabajo en continuo: aire transportado: 130°C, ambiente: 60°C.

BAJO DEMANDA

- Ventiladores para voltajes especiales.
- Motor 2 velocidades.
- Acabado pintura C4-C5.
- Galvanizado en caliente.
- Aceros especiales (Corten, Hardox...).
- Inox 304 (acabado normal o electropolido).
- Inox 316 (acabado normal o electropolido).
- Rodete de refrigeración.
- Pintura anticorrosiva.
- Carcasa reforzada.
- Carcasa totalmente soldada (estanca).
- Turbina con palas soldadas.
- Carcasa aislada.
- Carcasa partida (para tamaños grandes).
- Puerta inspección para facilitar el mantenimiento y la limpieza.
- Drenaje.
- Eje estanco.
- Pie frontal.
- Doble anillo aspiración.
- Disponibles con paso de aire antichispas y motor estándar.
- Otras marcas de motores.
- Orientación: RD0, RD45, RD90, RD135, RD180, RD225, RD270, RD315, LG0, LG45, LG90, LG135, LG180. LG225, LG315.

Ventiladores centrífugos de alta presión / directos


ACCESSORIES / accesorios

INT

 Interruptor de corte
 Safety switch

SFC

 Variador de velocidad frecuencial
 Frequency speed controller

RI

 Reja de protección.
 Outlet protection guard.

EI

 Embocadura impulsión
 Outlet flange

RA

 Rejilla aspiración
 Inlet protection guard

AC

 Brida conexión
 Connection flange

BAD

 Brida antivibratoria circular-circular
 Coupling flange

SIL-C

 Silenciador circular aspiración-impulsión
 Inlet-outlet circular silencer

JE 45

 Junta elástica
 Flexible joint

BA 400

 Brida antivibratoria 400°/2h
 Anti-vibrating flange 400°/2h.

FS

 Pie soporte delantero para ventiladores de media y alta presión
 Front support for medium and high pressure fans

AB

 Cabinas acústicas para ventiladores centrífugos Casals
 Acoustic cabins for Casals centrifugal fans

AVS

 Amortiguador de muelles.
 Spring anti-vibration blocks.

AVR

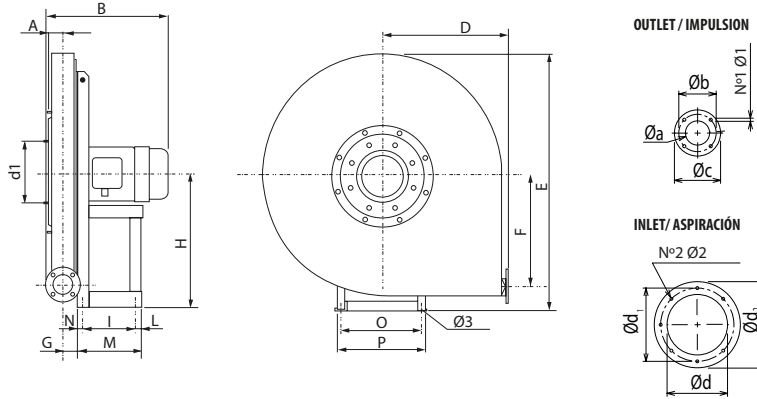
 Amortiguador antivibrátil de caucho.
 Anti-vibration rubber block.

THREE PHASE RANGE / serie trifásica
2 POLE / 2 polos

| Code | Model | R.P.M. | Rated I (A) 400V | Rated Power kW | Air flow m³/h | Sound dB (A) | Weight Kg | Connect. diagrams |
|-----------|-----------------------|--------|---------------------|-------------------|------------------|-----------------|--------------|----------------------|
| 502403114 | AAVA 310/P T2 0,25kW | 2.830 | 0,65 | 0,25 | 110 | 58 | 29 | 1 |
| 502403515 | AAVA 350/P T2 0,37kW | 2.830 | 0,91 | 0,37 | 180 | 59 | 33 | 1 |
| 502404016 | AAVA 400/P T2 0,55kW | 2.830 | 1,29 | 0,55 | 250 | 62 | 44 | 1 |
| 502404517 | AAVA 450/P T2 0,75kW | 2.850 | 1,67 | 0,75 | 320 | 64 | 46 | 1 |
| 502405018 | AAVA 500/P T2 1,1kW | 2.870 | 2,55 | 1,1 | 330 | 66 | 51 | 1 |
| 502405619 | AAVA 560/P T2 1,5kW | 2.900 | 3,48 | 1,5 | 360 | 68 | 89 | 1 |
| 502406319 | AAVA 631/P T2 1,5kW | 2.900 | 3,48 | 1,5 | 330 | 69 | 116 | 1 |
| 502406327 | AAVA 632/P T2 2,2kW | 2.900 | 4,98 | 2,2 | 400 | 70 | 119 | 1 |
| 502407129 | AAVA 711/P T2 3kW | 2.920 | 6,4 | 3 | 470 | 72 | 149 | 1 |
| 502407132 | AAVA 712/P T2 4kW | 2.930 | 8,2 | 4 | 540 | 73 | 168 | 1 |
| 502408032 | AAVA 801/P T2 4kW | 2.930 | 8,2 | 4 | 470 | 75 | 195 | 1 |
| 502408034 | AAVA 802/P T2 5,5kW | 2.940 | 11 | 5,5 | 540 | 77 | 197 | 1 |
| 502408036 | AAVA 803/P T2 7,5kW | 2.940 | 15 | 7,5 | 720 | 79 | 197 | 1 |
| 502409021 | AAVA 901/P T2 11kW | 2.950 | 19,8 | 11 | 870 | 81 | 330 | 1 |
| 502409024 | AAVA 902/P T2 15kW | 2.960 | 26,6 | 15 | 1.230 | 83 | 390 | 1 |
| 502410026 | AAVA 1001/P T2 18,5kW | 2.960 | 32 | 18,5 | 1.440 | 85 | 442 | 1 |
| 502410028 | AAVA 1002/P T2 22kW | 2.970 | 39 | 22 | 1.640 | 87 | 501 | 1 |



DIMENSIONS / dimensiones



| MODEL | Ø 3 | A | B | D | E | F | G | H | I |
|-----------------------|-----|----|-----|-----|------|-----|----|-----|-----|
| AAVA 310/P T2 0,25kW | 10 | 34 | 280 | 270 | 550 | 220 | 30 | 280 | 86 |
| AAVA 350/P T2 0,37kW | 10 | 34 | 310 | 270 | 550 | 220 | 30 | 280 | 121 |
| AAVA 400/P T2 0,55kW | 10 | 34 | 310 | 350 | 705 | 300 | 31 | 355 | 121 |
| AAVA 450/P T2 0,75kW | 10 | 34 | 335 | 350 | 705 | 300 | 31 | 355 | 121 |
| AAVA 500/P T2 1,1kW | 10 | 34 | 335 | 350 | 705 | 300 | 31 | 355 | 121 |
| AAVA 560/P T2 1,5kW | 10 | 34 | 380 | 405 | 830 | 355 | 32 | 425 | 133 |
| AAVA 631/P T2 1,5kW | 10 | 34 | 380 | 405 | 830 | 355 | 32 | 425 | 133 |
| AAVA 632/P T2 2,2kW | 10 | 34 | 380 | 405 | 830 | 355 | 32 | 425 | 133 |
| AAVA 711/P T2 3kW | 12 | 40 | 440 | 455 | 930 | 400 | 38 | 475 | 197 |
| AAVA 712/P T2 4kW | 12 | 40 | 460 | 455 | 930 | 400 | 38 | 475 | 197 |
| AAVA 801/P T2 4kW | 12 | 40 | 460 | 505 | 1035 | 450 | 38 | 530 | 197 |
| AAVA 802/P T2 5,5kW | 12 | 40 | 460 | 505 | 1035 | 450 | 38 | 530 | 197 |
| AAVA 803/P T2 7,5kW | 12 | 40 | 460 | 505 | 1035 | 450 | 38 | 530 | 197 |
| AAVA 901/P T2 11kW | 14 | 49 | 610 | 570 | 1170 | 500 | 48 | 600 | 337 |
| AAVA 902/P T2 15kW | 14 | 49 | 610 | 570 | 1170 | 500 | 48 | 600 | 337 |
| AAVA 1001/P T2 18,5kW | 14 | 49 | 610 | 635 | 1305 | 560 | 48 | 670 | 337 |
| AAVA 1002/P T2 22kW | 14 | 49 | 610 | 635 | 1305 | 560 | 48 | 670 | 337 |

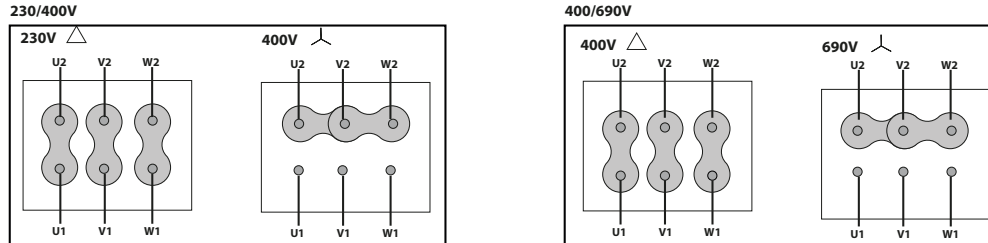
| MODEL | L | M | N | N1x Ø1 | N2x Ø2 | O | P | Ø a | Ø b |
|-----------------------|----|-----|----|--------|--------|-----|-----|-----|-----|
| AAVA 310/P T2 0,25kW | 14 | 145 | 45 | 4x8,5 | 8x8 | 184 | 206 | 54 | 84 |
| AAVA 350/P T2 0,37kW | 23 | 189 | 45 | 4x8,5 | 8x8 | 203 | 225 | 54 | 84 |
| AAVA 400/P T2 0,55kW | 23 | 189 | 45 | 4x8,5 | 8x8 | 203 | 225 | 54 | 84 |
| AAVA 450/P T2 0,75kW | 45 | 211 | 45 | 4x8,5 | 8x8 | 203 | 225 | 54 | 84 |
| AAVA 500/P T2 1,1kW | 45 | 211 | 45 | 4x8,5 | 8x8 | 203 | 225 | 54 | 84 |
| AAVA 560/P T2 1,5kW | 58 | 246 | 55 | 4x8,5 | 8x8 | 246 | 260 | 54 | 84 |
| AAVA 631/P T2 1,5kW | 58 | 246 | 55 | 4x8,5 | 8x8 | 234 | 260 | 54 | 84 |
| AAVA 632/P T2 2,2kW | 58 | 246 | 55 | 4x8,5 | 8x8 | 234 | 260 | 54 | 84 |
| AAVA 711/P T2 3kW | 49 | 276 | 30 | 4x8,5 | 8x8 | 289 | 324 | 66 | 102 |
| AAVA 712/P T2 4kW | 49 | 276 | 30 | 4x8,5 | 8x8 | 289 | 324 | 66 | 102 |
| AAVA 801/P T2 4kW | 49 | 276 | 30 | 4x8,5 | 8x8 | 289 | 324 | 66 | 102 |
| AAVA 802/P T2 5,5kW | 49 | 276 | 30 | 4x8,5 | 8x8 | 289 | 324 | 66 | 102 |
| AAVA 803/P T2 7,5kW | 49 | 276 | 30 | 4x8,5 | 8x8 | 289 | 324 | 66 | 102 |
| AAVA 901/P T2 11kW | 49 | 436 | 50 | 4x8,5 | 8x8 | 395 | 440 | 83 | 118 |
| AAVA 902/P T2 15kW | 49 | 436 | 50 | 4x8,5 | 8x8 | 395 | 440 | 83 | 118 |
| AAVA 1001/P T2 18,5kW | 49 | 436 | 50 | 4x8,5 | 8x8 | 395 | 440 | 83 | 118 |
| AAVA 1002/P T2 22kW | 49 | 436 | 50 | 4x8,5 | 8x8 | 395 | 440 | 83 | 118 |

| MODEL | Ø c | Ø d | Ø d1 | Ø d2 |
|-----------------------|-----|-----|------|------|
| AAVA 310/P T2 0,25kW | 104 | 145 | 182 | 215 |
| AAVA 350/P T2 0,37kW | 104 | 145 | 182 | 215 |
| AAVA 400/P T2 0,55kW | 104 | 145 | 182 | 215 |
| AAVA 450/P T2 0,75kW | 104 | 145 | 182 | 215 |
| AAVA 500/P T2 1,1kW | 104 | 145 | 182 | 215 |
| AAVA 560/P T2 1,5kW | 104 | 145 | 182 | 215 |
| AAVA 631/P T2 1,5kW | 104 | 145 | 182 | 215 |
| AAVA 632/P T2 2,2kW | 104 | 145 | 182 | 215 |
| AAVA 711/P T2 3kW | 126 | 165 | 200 | 235 |
| AAVA 712/P T2 4kW | 126 | 165 | 200 | 235 |
| AAVA 801/P T2 4kW | 126 | 165 | 200 | 235 |
| AAVA 802/P T2 5,5kW | 126 | 165 | 200 | 235 |
| AAVA 803/P T2 7,5kW | 126 | 165 | 200 | 235 |
| AAVA 901/P T2 11kW | 143 | 185 | 219 | 250 |
| AAVA 902/P T2 15kW | 143 | 185 | 219 | 250 |
| AAVA 1001/P T2 18,5kW | 143 | 185 | 219 | 250 |
| AAVA 1002/P T2 22kW | 143 | 185 | 219 | 250 |



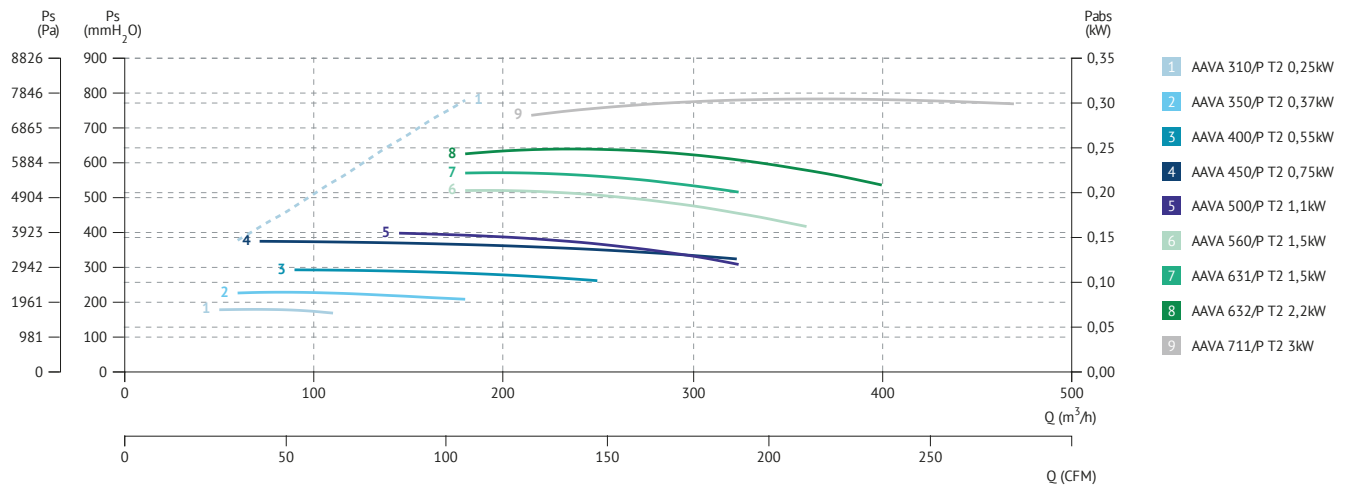
CONNECTION DIAGRAMS / esquema de conexiones

1 THREE PHASE MOTORS 1 SPEED / motores trifásicos 1 velocidad



CHARACTERISTIC CURVES / curvas características

2 POLE / 2 polos



2 POLE / 2 polos

